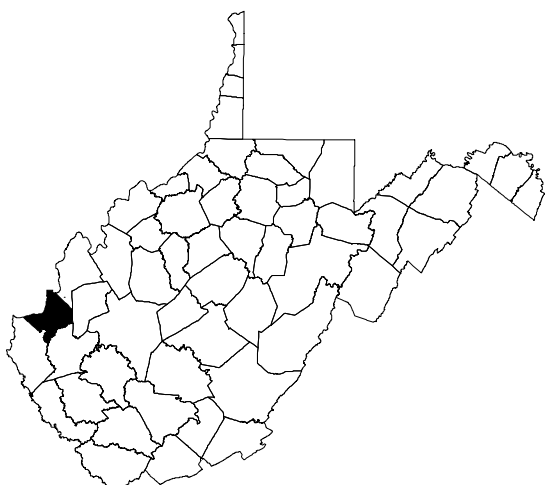
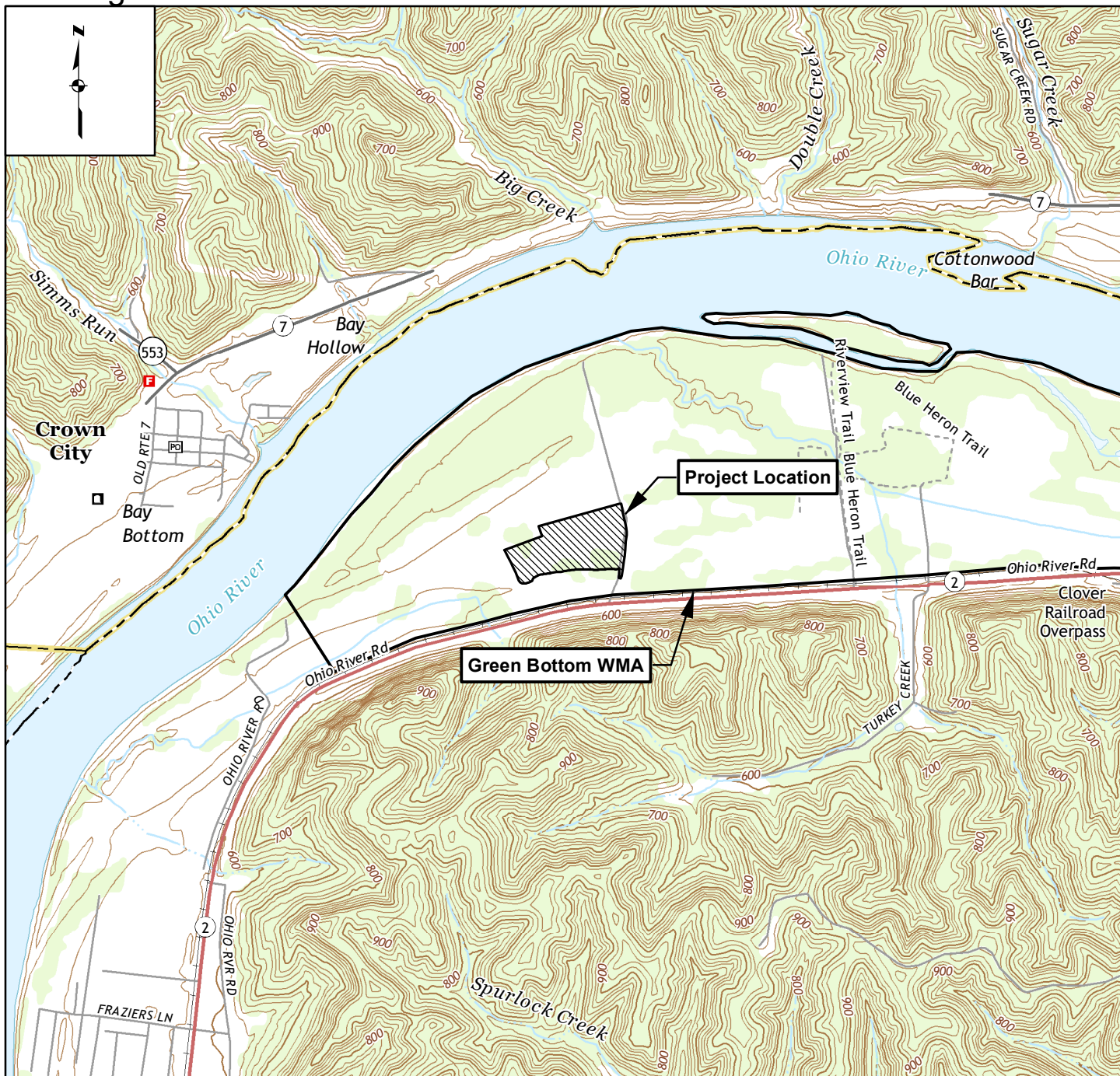


Figure 1




DRAWN		West Virginia Department of Environmental Protection			
DATE	BY	601 57th Street SE Charleston, WV 25304			
06/17	BJC				
REVISED					
DATE	BY				
APPROVED		Green Bottom Wildlife Management Area			
DATE	BY	ILF Project No. EPWR17040			
		General Location Map			
		Exhibit 1			
		UnionTax District		Cabell County	
		Althalia Quadrangle		West Virginia	
		Contour Interval	Coordinate System	Scale	Sheet No.
		N/A	NAD 83 WVSP South	1" = 2,000'	1 of 1
PATH W:\Projects-Stream\Green Bottom WMA\GIS\MitigationPlan_Exhibit_1.mxd					
		 PREPARED BY: DECOTA CONSULTING COMPANY, INC. 4984 WASHINGTON STREET, W. CROSS LANES, WV 25313			

Figure 2

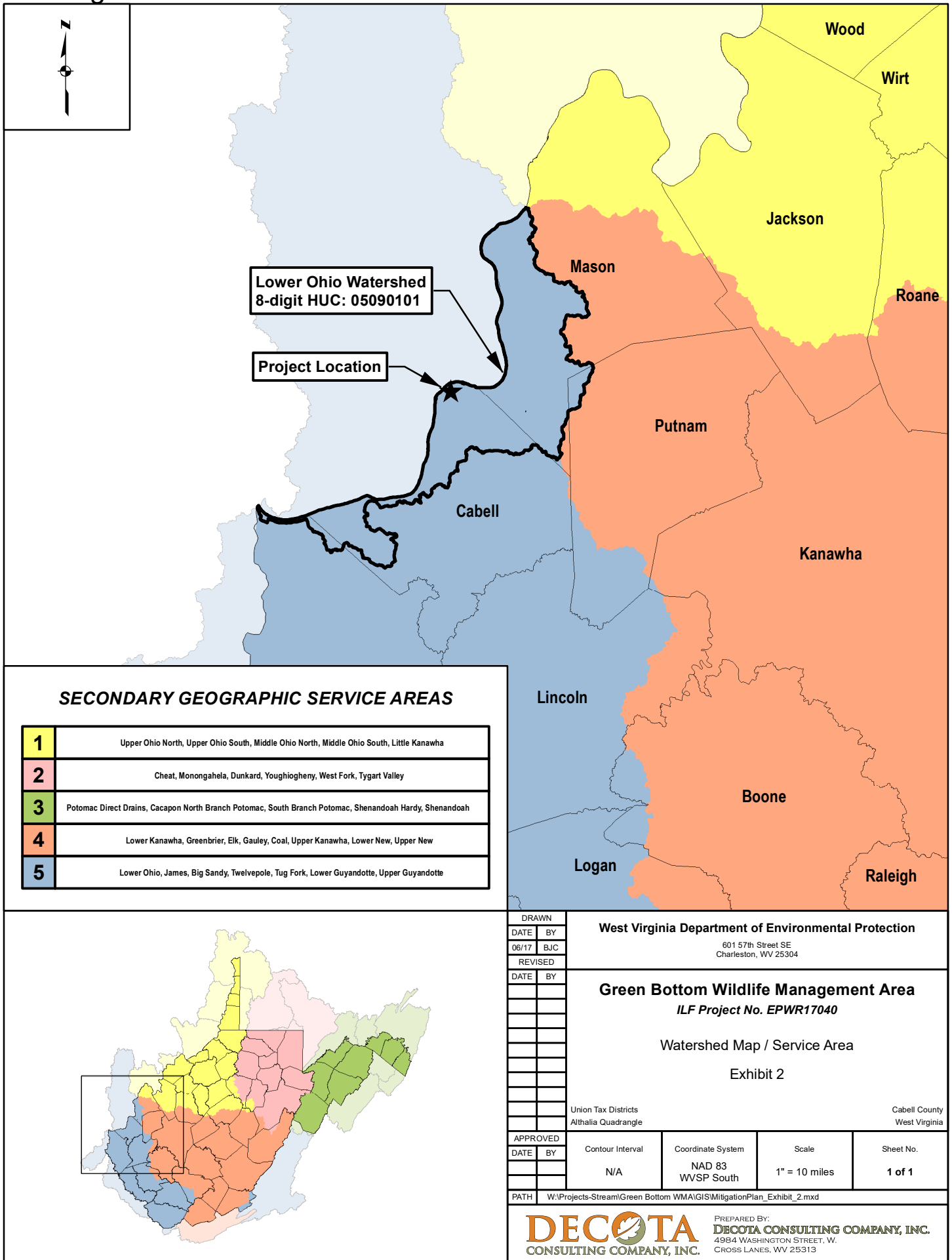


Figure 3

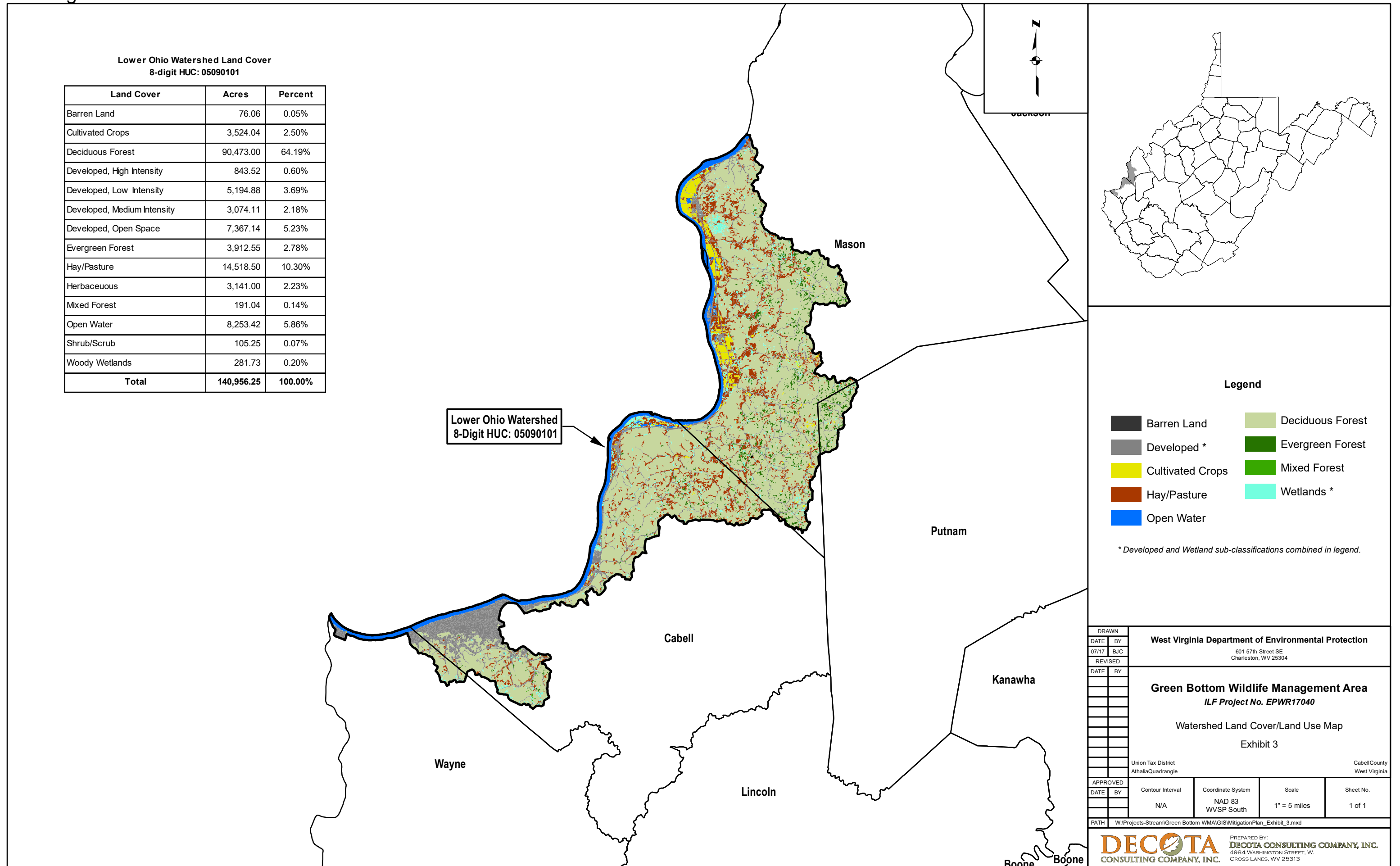
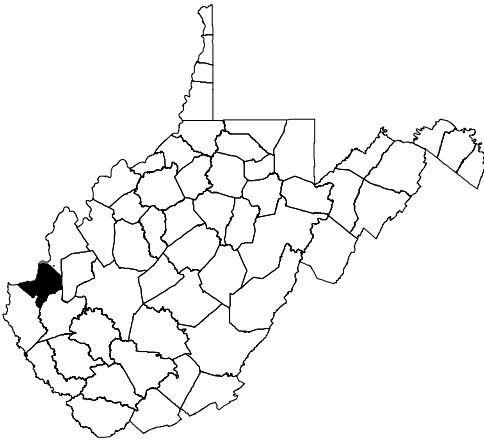


Figure 4



Wetland Classification	Acres
Palustrine Emergent	3.01
Palustrine Shrub/Scrub	2.26

Legend	
	Perennial Channel
	Intermittent Channel
	Ephemeral Channel
	Channel Outside Delineation
	Culvert
	No OHWM
	Delineated Wetland Palustrine Shrub/Scrub
	Delineated Wetland Palustrine Emergent
	Start / End of Delineation
	Perennial Point
	E/I Point
	EOHM
	EI / EOHM
	Wetland Pit
	Water Feature
	Delineation Boundary

DRAWN		West Virginia Department of Environmental Protection 601 57th Street SE Charleston, WV 25304			
DATE	BY				
06/17	BJC				
REVISED		Green Bottom Wildlife Management Area ILF Project No. EPWR17040			
DATE	BY				
		Wetland Delineation Map Exhibit 4			
		Union Tax District Athalia, Glenwood Quadrangles			
APPROVED		Contour Interval 1'	Coordinate System NAD 83 WVSP South	Scale 1" = 200'	Sheet No. 1 of 1
DATE	BY				
		PATH W:\Projects-Stream\Green Bottom WMA\GIS\MitigationPlan_Exhibit_4.mxd			
		DECOTA CONSULTING COMPANY, INC. PREPARED BY: DECOTA CONSULTING COMPANY, INC. 4984 WASHINGTON STREET, W. CROSS LANES, WV 25313			

Figure 5



Predicted SWVM Wetland Credit Generation		
Wetland Type	Acres	Functional Credits
Palustrine Emergent	5.75	6.325
Palustrine Shrub/Scrub	3.6	4.059
Open Water	2.33	2.563
TOTAL	11.68	12.848

Legend

- Wetland Restoration (2.33 ac.)
Open Water
- Wetland Restoration (5.75 ac.)
Palustrine Emergent
- Wetland Restoration (3.6 ac.)
Palustrine Scrub-Shrub
- 25' Supplemental Planting Buffer

DRAWN				West Virginia Department of Environmental Protection 601 57th Street SE Charleston, WV 25304			
DATE	BY	DATE	BY				
07/17	BJC	REVISD					
DATE	BY	DATE	BY	McClintic Wildlife Management Area ILF Project No. EPWR17040 Mitigation Plan Map Exhibit 5			
APPROVED				Union Tax District Athalia Quadrangle			
DATE	BY	DATE	BY	Cabell County West Virginia			
				Contour Interval	Coordinate System	Scale	Sheet No.
				1'	NAD 83 WVSP South	1" = 150'	1 of 1
PATH				W:\Projects-Stream\Green Bottom WMA\GIS\MitigationPlan_Exhibit_5.mxd			